

Sage

F R I E N D S O F G O O D A N R A N C H &
S Y C A M O R E C A N Y O N O P E N S P A C E

THE PRESIDENT'S MESSAGE

All trails are currently open. The Preserve may be closed during and after heavy rains. For your safety, please observe all closure notices. Park hours are: April - September (8 a.m. - 7 p.m.); October - March (8 a.m. - 5 p.m.) For more information, call the Visitor Center at 858-513-4737.

Board members of Friends of Goodan Ranch & Sycamore Canyon Open Space

President—Carol Crafts

VP—Ann Tibbs

Secretary—Phoenix Von Hendy

Treasurer—Terry Calian

Board Members at Large—DeAnne Erickson

Timothy Ann Hunt

Michael Overy

Catherine Overy

Barbara Lerma

Shawnie Williams

This March San Diego County Parks said farewell to Cailin Hunsaker, District Manager, Inland Hub District. She is pictured here with Ranger Maureen.



We wish Cailin and her husband best wishes in their new endeavors.

Please read the April 13th San Diego Reader Magazine article by Dryw Keltz before riding or hiking

south of Goodan Ranch.

Look at the new shade structure which Friends helped pay for. It is nearly complete. It has a great view towards Santee!!



STOWE

Two school desks donated by Ron & Sandie Snodgrass of Poway are now in the



Goodan Visitor Center representing the Stowe School District.

Early April, Carol was able to help a senior Archaeologist who was researching early families nearby to the Stowe area.

TRACKING REPORT

Not many deer, lots of bobcat scat, some coyote scat, a number of roadrunner tracks.

If you have questions about wildlife in your area, you will find additional information on the Department of Fish and Wildlife website <https://www.wildlife.ca.gov/> or you can call their office (619) 571-4540.



Roadrunner

The JPA meeting has been rescheduled to 31 May, 2016

ON SITE NEWS

The red hand on our fence thermometer edged up to 100 degrees several times in the last few weeks. As the earth tilts slightly closer to the sun each day, summer heat blasts are becoming more frequent. Park residents and visitors are savoring the remaining temperate spring days. The more reclusive animals are less evident to the park humans. It seems that the moisture brought by the mild El Nino allows the shy deer, bobcats, and even coyotes to live in the remote areas of the park. More visible are snakes, quail, road-runners, and cottontail rabbits. Lovely sage blossoms dot the ranger station garden like thick white snowflakes.



San Diego Wood rat

Periodically Phoenix Von Hendy and the San Diego Trackers perform a transect survey on specific sections in the park. Animal signs in these sections such as tracks, nests, scat, scratchings, and deer lays are noted and counted. I went along on a recent transect and searched for various animals signs. The woodrat is a nocturnal animal that is counted by observing the presence of its nests. This little saucer eared, black-eyed rodent builds domed, multi-unit nests made of sticks tucked at the base

of the chaparral. The number of woodrat nests can provide information about the health of the park environment. I feel privileged to participate in the transects. Phoenix is a great teacher, and I come away with additional knowledge of the animals that share the park with us.



Large nest created by a woodrat

As summer rolls in to the park, Mike and I will be rolling out. We are moving to our condominium near San Diego State to rehab it. We will be looking north to see Cowles Mountain rather than south! Words can't describe our experience in this lovely park. Heartfelt thanks to Ranger Maureen, Ranger Justin, Jeff, Maria, Zach, and Ben. You welcomed us to your park and showed us so much kindness. Our horses Tiny and Savannah are in the stables just outside the park, so we will be back to visit once or twice a week. Annie, the boxer dog, will visit her special park friends who love her. Life is good and life is ever-changing.

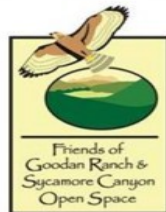
Mission Trails Regional Park- West Sycamore

1,128 acres with about seven miles of multi use trails now links to our property on the west. Access is available from our Poway Staging area and from Stonebridge Parkway off of Pomerado Road. For programs and more information call 619-668-3281 or go to: www.mtrp.org.

Become a Member

Do you love to bike, hike, or walk the beautiful hills and meadows of Goodan Ranch and Sycamore Canyon? If so, it is time to support the Friends of the Goodan Ranch and Sycamore Canyon. Please fill out the membership form below, place the completed form in an envelope with your check and mail it today. Thank you.

We count on your membership to raise money to keep this area the way you would like it... an open nature and history center.



**Friends of Goodan Ranch
&
Sycamore Canyon Open Space**

Webpage—GoodanRanch.org

Facebook—Goodan Ranch

Email—FriendsOfGoodanRanch@gmail.com

**Please enroll me as a member of Friends of
Goodan Ranch & Sycamore Canyon Open
Space.**

Name or Business _____

Contact Name _____

Address _____

City, State, Zip _____

Phone _____

Please select your membership level

- ☐ • \$25 Individual
- ☐ • \$20 Student /or/ Senior -62 and above
- ☐ • \$40 Family
- ☐ • \$50 Small Business
- ☐ • \$100 Patron
- ☐ • \$1,000 Lifetime Member

Fill out the requested information & mail it with your check to:

Friends of Goodan Ranch & Sycamore Canyon
Memberships
13030 Birch Lane
Poway, CA 92064

Thank you to our members for participating in important conservation work!

Members Karen and Carol attended the April 27, 2016 Management/Monitoring Coordination meeting where Dr. Akif Eskalen and Shannon Lynch gave a presentation on the shot hole borer.

On May 4th and 5th Karen and Carol participated in rare plant monitoring. We worked with Lance Woolley, Ranger Maureen and an Intern documenting previously recorded thornmint sites and some new ones.

San Diego Thornmint (*Acanthomintha ilicifolia*)

When you are walking, hiking, or biking, be aware of the San Diego thornmint. The plant is extremely rare and is on the California endangered species list, and on the Federal Government's endangered species list. The San Diego thornmint is covered in the San Diego Multiple Species Conservation Plan NCCP.

So what does this mean?

In short, it means it is illegal to kill or possess this plant. Please don't walk on it, nor crush it! Sycamore Canyon is one of the few known areas where this rare herb grows.

So what exactly is this plant?



The San Diego thornmint is an annual that that only occurs naturally in southwestern San Diego County and northern Baja California in openings within coastal sage scrub, chaparral, and native grassland. It grows only on gentle southeast to west facing slopes and blooms April through June.

San Diego thornmint is a small, aromatic annual in the mint family (Lamiaceae) with delicate white and rose colored flowers. The lower halves of its leaves are wedge-shaped and its flower clusters are covered by prominently spined bracts.



EVENTS AT GOODAN RANCH / SYCAMORE CANYON

All events are free.

For information or to make event reservations call (858) 513-4737 or email Justin.Gibbons@sdcounty.ca.gov.

- June 4th **Movies in the Moonlight - sunset - Back to the Future**
*A large screen will be set up in the Highway 67 staging area. Bring your family and friends for a chance to experience a modern movie in a beautiful, natural setting. Call ranger station closer to date for movie title. Dress warm and bring a flashlight and something to sit on. See you all there! **Rain or muddy conditions cancel.** Program will be held at the Highway 67 staging area.*
- June 18th **Night Hike - sunset**
*Join Park Staff for an enlightening hike and learn all about the different animals you can encounter here locally once the sun sets. Bats, snakes, coyotes, tarantulas and more! Come prepared for a hike. **Space is limited to 25 so please call (858)513-4737 for reservations.** **Rain or muddy conditions cancel.** Program will meet at Goodan staging area.*
- July 15th **Star Party - sunset**
*Join SDAA volunteer astronomers and County Parks for a night with the stars. **Program will be held at Highway 67 Staging area accessed Highway 67 southbound only. RAIN or CLOUDS CANCEL.***

Events, hikes and programs start at various Preserve locations. **Some require a one mile walk from Goodan Ranch staging to the Visitor Center.**

**ALLOW ½ HOUR TO PARK AND WALK TO THE
VISITOR'S CENTER.**

Please check descriptions closely.

No vehicular traffic is permitted in the Preserve.

Transportation for those with disabilities can be arranged, by calling the **Ranger at (858)513-4737.**

Goodan staging area accessed from Poway Rd. east on Garden Rd, then south on Sycamore Canyon Rd. Sycamore Canyon Rd. ends at parking lot.

Highway 67 staging area accessed through **SOUTHBOUND** Highway 67 only, half a mile south of Scripps Poway Parkway.

The Parks website is www.sdparks.org.

During and after rainy weather the Parks Preserves are closed for safety and damage control due to muddy, wet trails and roads.

Please check the Parks website or call the ranger's office at 858-513-4737 for Preserve status.

HOW MUCH DAMAGE CAN ONE TINY BUG CAUSE?

Akif Eskalen steps through the dense, damp leaves in a wooded neighborhood, scrutinizing the branches around him. He's looking for evidence of an attack: tiny wounds piercing the bark and sap dried around them like bloodstains.

The victims are box elders, sycamores and coast live oaks, all in some state of suffering.



Eskalen approaches a tree riddled with 1-millimeter holes, as if someone used it for miniature target practice. It's time to nab a perp. He selects a hole, pulls out a large knife and expertly levers out a chunk of wood.

There, in his hand, is a glossy beetle no larger than a sesame seed: the **Polyphagous Shot Hole Borer**.

Though small and sluggish, its appetites are wide and its spread is relentless. It attacks forest trees, city trees and key agricultural trees. It has defied all conventional and chemical weapons. No one seems to have a way to stop it.

These beetles have a strange M.O. They don't eat wood, like termites; instead, they drill circular tunnels toward the heart of the tree. They carry fungal spores in their mouths and sow them like seeds as they go. Then they harvest the fungus to feed their larvae. It's a deadly partnership: The beetles attack, but the fungus also helps to kill, colonizing the wood tissue and spreading through the plant.

"If we can't control them, they are going to wipe out all our trees..."

Its hosts include California natives such as coast live oaks and sycamores, and key agricultural crops, including avocado. The beetle's adaptability and wide host range make it tricky to identify, because symptoms of infestation vary among the hundreds of trees it attacks. A handout on Eskalen's website shows the beetles' effects on different trees ...Some ooze with gummy deposits on their bark... Others display dark or reddish stains on their trunks. ...Still others erupt in clusters of crystals called "sugar volcanoes." The beetles are prolific breeders too, and can lay eggs several times per year, experts said.

The beetles have easily evaded the authorities. Inside the tree, they're well protected from pesticide sprays. The incestuous offspring mate with their siblings inside the trunk, so sex pheromones do not lure them out.

"If we can't control them," Eskalen said, "they are going to wipe out all our trees."



A genetic analysis traced the bugs to Vietnam. Unlike other insects that target just a few species, the shot-hole borer beetle is an equal opportunity pest, infesting at least 286 tree species and posing the potential for widespread destruction.

Its hosts include California natives such as coast live oaks and sycamores, and key agricultural crops, including avocado. The shot-hole borer beetle injects trees with a fungus, which it then "farms" for food. The beetle's adaptability and wide host range make it tricky to identify, because symptoms of infestation vary among the hundreds of trees it attacks. A handout on Eskalen's website shows the beetles' effects on different trees ...Some ooze with gummy deposits on their bark... Others display dark or reddish stains on their trunks. ...Still others erupt in clusters of crystals called "sugar volcanoes." The beetles are prolific breeders too, and can lay eggs several times per year, experts said.

"The female will bore into hundreds of typical, common tree species," Launder said. "In most of those species, the fungus will grow. The fungus is the food source for their offspring. The tree ends up just bleeding."

The Polyphagous shot hole borer beetle is even worse than the oak-borer beetle as it infects many more varieties of trees.

What to do:

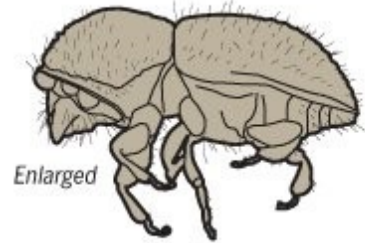
- Look for a single exit hole with surrounding white powdery exudates.
- Scrape off the bark layer around the infected area to see the canker.
- Follow the gallery to look for the beetle (it may or may not be present).
- **DO NOT** move infested wood out of the infested area, including firewood.
- Look for other hosts (castor bean, box elder, black locust, coast live oak) showing symptoms of the beetle/disease.
- There are no effective treatments against this pest/disease complex.
- If you remove an infested tree, chip it or cut it into firewood and cover with clear plastic for at least 2 months to kill any remaining beetles.
- **DO NOT** move the tree from your property to prevent spreading the beetle and disease.

Who to contact if you find the problem:

If you suspect that you have found this beetle or seen symptoms of the disease on your tree or in surrounding areas please contact either your local Cooperative Extension Office or Dr. Akif Eskalen by phone 951-827-3499 or email at akif.eskalen@ucr.edu.

Some parts of this article were copied in part from articles in the La Times - Amina Khan - and the UT San Diego - Deborah Sullivan Brennan

Polyphagous shot hole borer beetle



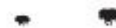
Color: brown or black

Some known host include:

Box Elder, castor bean, avocado, English oak, California coast live oak, big leaf maple, silk tree, Liquidambar, coral tree, Titoki tree, California sycamore and Blue Palo Verde

Approximate size:

Male	Female
1.5 mm	2.5 mm



Sources: Eskalen lab; UC Riverside

AARON STECKELBERG • U-T

**MINUTES OF THE FRIENDS OF
GOODAN RANCH
AND
SYCAMORE CANYON**

May 2, 2016

Board members: Carol Crafts, Shawnie Williams, Cathy Overy, Mike Overy, Ann Tipps, Terry Callan, Barbara Lerma, De Anne Erickson A quorum was present.

Guests: Robert Crafts

The meeting was called to order at 7:05pm.

Secretary's Report:

included in newsletter: Spelling of Barbara Lerma's last name needs correcting. Accepted otherwise.

Treasurer's Report :

Income - \$1605 Expenses - \$281 Checking Account Balance - \$2518
Savings Account Balance - \$13891 Total Balance - \$16409

Statement for non-profits filed last week.

Membership: no new memberships to report

Scripps Ranch Fair coming up Sunday, May 15th. SDTT will share a space with us again this year. Address of the park is 11454 Blue Cypress Drive, San Diego 92121
Participating: Carol Crafts-Phoenix Von Hendy-Cathy & Mike Overy

Board status:

We are good for now. Elections are coming up in August for next year's board. The Friends are sorry to have Mike and Cathy leave the reserve but we are blessed that they will continue on the Board of the Friends.

Wildlife Monitoring: No report.

San Diego Maintenance and Monitoring Meeting: - Attended by Carol Crafts and Karen Larsen-Gordon. Info was presented about two new pests that are impacting most of our tree species.

JPA meeting coming up Tuesday, May 17 at 1:00 pm at Goodan Ranch visitor's center.

Tracking Report:

Not many deer, lots of bobcat scat, some coyote scat, a number of roadrunner tracks.

Terry Callan reports biking trail towards Santee has a no trespassing sign, but the Ridge Trail is lovely after repairs. The Overys report that number of bikers in the park is down,

Ranger's Report:

1. Volunteers Mike and Cathy leaving in May looking for new volunteers.
2. We have several current new park attendants Zach Hunter, Maria Buckner, and Ben Madruga
3. Staff built a new shade ramada at HWY67 staging. Thanks to friends for contributing funding) Major restoration of area turned into a scenic picnic area. More benches, and ramadas planned for Ridge Trail.
4. New Wu and Cielo property biological, archaeological and trails baseline surveys started by AECOM.
5. Ongoing wildlife surveys by ICF for Preserve Management Plan
6. Wu safety fencing walk thru next week
7. Preserve road restoration repairs starting on Cardiac Hill
8. Habitat restoration planting rogue trails ongoing
9. Invasive weeds removal tremendous efforts massive task
10. Ongoing interpretive programs Star Parties, Edible Plants , Snakes were well attended
11. Planning future wildlife programs targeting under privileged Star Pals, Seniors, Crisis House
12. DM Cailin gone new DM pending
13. Native planting ongoing at the visitor center landscaping

Next Board Meeting is Monday, August 1st.

Meeting adjourned at 7:52 pm

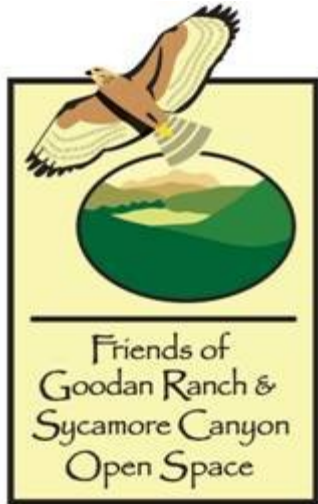
The 17th Annual Scripps Ranch Community Fair took place on May 15th.



We were blessed with cooler weather this year. Cathy, Mike, Phoenix, Barbara and Carol enjoyed the day sharing our park and tracking information with many visitors.



WE ARE ON THE WEB
AT
GOODANRANCH.ORG/
POWAY



Please “Like” us on Facebook:
Goodan Ranch

We are on the Web at:
GoodanRanch.org

Contact us by email at:
FriendsofGoodanRanch@gmail.com

