

# Sage

F R I E N D S   O F   G O O D A N   R A N C H   &  
S Y C A M O R E   C A N Y O N   O P E N   S P A C E

## THE PRESIDENT'S MESSAGE

### Goodan Ranch and Sycamore Canyon Open Space Preserve



The Preserve may be closed during and after heavy rains. For your safety, please observe all closure notices.

Park hours are: April - Sept  
(8 a.m. - 7 p.m.);  
Oct- March (8 a.m. - 5 p.m.)  
For more information, call  
the Visitor Center at  
858-513-4737.

The Friends of Goodan  
Ranch/Sycamore Canyon  
are on the web:

[GoodanRanch.Org](http://GoodanRanch.Org)

### Board members of Friends of Goodan Ranch & Sycamore Canyon Open Space

#### President

Carol Crafts

#### Vice President

Ann Tibbs

#### Secretary

Phoenix Von Hendy

#### Treasurer

Terry Callan

#### Board Members

##### at Large

Michael Overy

Catherine Overy

Barbara Lerma

The name of our park indicates part of the mission - maintain open space. Over time the County has been able to purchase additional parcels of land. Our park is an oasis of history. In the late 1800's, homesteaders formed a community known as Stowe. (The business park along Scripps Poway Parkway and many of the street names come from these families). In 1991 a Joint Powers Agreement brought together the Cities of Santee and Poway, San Diego County Parks and the State Wildlife Conservation Board enabling the purchase of the 321 acres known as Goodan Ranch. In 1996 the Multiple Species Conservation Program (MSCP) identified lands to safeguard native and endangered habitat for future generations while working side by side with recreational needs of the people. Our park is an important link in the wildlife corridors. We are fortunate to see that this plan has worked and mountain lion, deer, fox and coyote to name a few are still found here - along with the recreational users on foot, on bike or on horse.

Concerned citizens worked with the San Diego Water Authority and found a working compromise for the water storage project. A wildlife tunnel was constructed under Scripps Poway Parkway to provide safe passage for wildlife. The San Diego Tracking Team continues to monitor the success of this project. The Goodan family occupied the land from 1938 into the 1970's and continues to visit and support our park.

Please familiarize yourselves with the proposed Public Access Plan and the SDG&E pipeline through the links found in this newsletter. I also want to encourage you to walk our trails and see for yourself the jewel in our county.

*Carol Crafts*

## THANK YOU & FAREWELL



**We are losing two of our Board Members.**

DeAnne Erickson has served as treasurer as well as a general board member for many years. We wish her and Paul happiness in their new adventures.

We also give many thanks to Ann Hunt for serving on the board..



**There are also some changes to the Park Personnel.**



Justin Gibbons will be leaving Goodan Ranch to work at Steltzer and El Capitan Parks.

Pharaoh will be leaving soon for another position after a short stay at our Park.



## WELCOME



We are very happy to welcome **Louis Chertkow** who has been assigned as our Supervising Ranger along with **Adam Galler** who is coming as the new Park Attendant.

We look forward to working with both of you.



## SAY "NO" TO OVER-DEVELOPMENT OF NEW TRAILS

Sycamore Canyon Preserve Wildlife, Habitat, and Cultural Resources need your protection and support by saying NO to the overdevelopment of unnecessary new trails as proposed in this public access plan. Please take a moment to email your comments AGAINST this proposal.

The background is that the County is working on putting a trails plan in place for county parks, including Sycamore Canyon/Goodan Ranch Open Space Preserve.

Sycamore Canyon/Goodan Ranch Open Space Preserve has been popular with mountain bikers for years, although nowhere near as widely used as many of the other county parks such as Los Penasquitos. The trails at Sycamore Canyon tend to be rugged, more suitable to experienced riders.

In collecting public input for their PAP (Proposed Access Plan) for Sycamore Canyon, the county has relied heavily on the mountain bike community and has come up with a proposal that looks uncomfortably like an OHV road map for Glamis. After stating they were planning on closing illegal trails made by bikers in the Preserve, now they propose to not only keep all the existing legal and illegal trails, but also to add miles of additional trails. The proposed new trails are heavily concentrated in the northeastern quadrant of the preserve, on three newly acquired properties that the bikers had trespassed on when they were still privately owned, creating a number of illegal trails. These properties contain sensitive habitat, endangered plants, and historic sites.

The other big problem with the proposed plan is that it retains trails that lead up to and even cross private property. Worse yet, there are new proposed trails that lead to additional private property. This invites trespassing on the private property.

Finally, Sycamore Canyon Open Space Preserve is MSCP land, important for our local wildlife and contains a number of wildlife corridors, both north-south and east-west. Maximizing human impact by building so many miles of trails is not good for the preservation of our local flora and fauna.

Phoenix Von Hendy  
President  
San Diego Tracking Team - [SDTT.org](http://SDTT.org)

Please review this link: [http://www.sdparks.org/content/dam/sdparks/en/pdf/Development/Station%203\\_Proposed%20Public%20Access%20Plan.pdf](http://www.sdparks.org/content/dam/sdparks/en/pdf/Development/Station%203_Proposed%20Public%20Access%20Plan.pdf)



## “SO EASY TO HIKE” APP



County Parks launched a new trails app that makes it even easier to get information on hiking, biking, and riding paths in our parks and preserves.

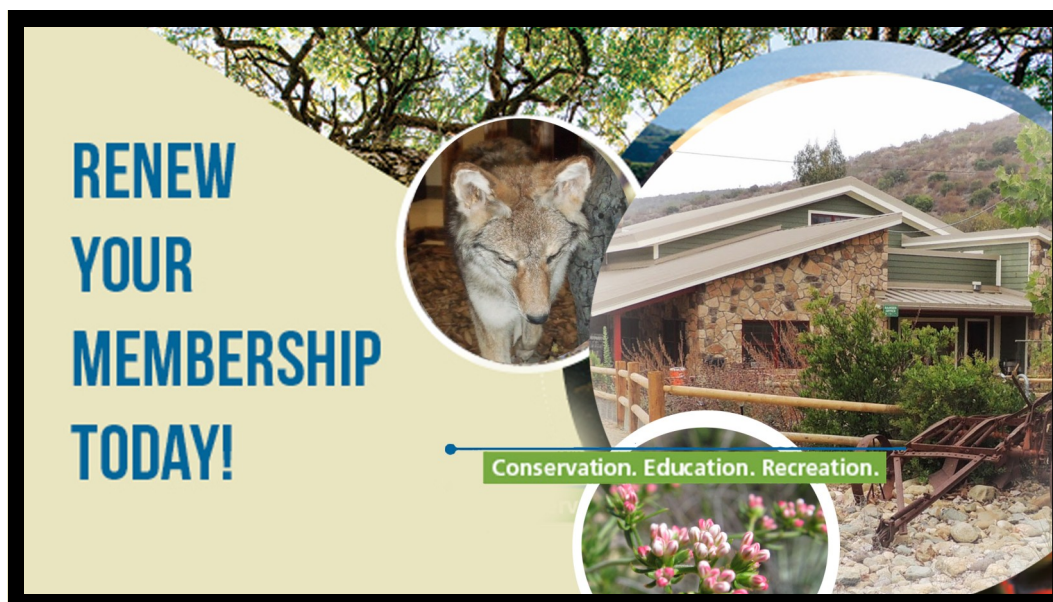
[Easy2Hike](#) is a free app that allows users to locate and view trailheads, park maps, and points of interest in Southern California and beyond. The mobile app shows park visitors everything they need to know about the park they are visiting, such as recommended routes, points of interest, and engaging educational content.

County Parks went live with trails at 16 properties including the **Goodan Ranch/Sycamore Canyon County Preserve**,

Additional parks will be added in the coming months. App creators will also be launching new benefits, like the ability to send instant messages to park staff and opportunities to learn about upcoming activities and events.

Download **Easy2Hike** from your favorite mobile device today, and start exploring!

Get it now --> <https://easy2hike.app.link/iFG8zsQ6jK>



*Thank You*

# MINUTES OF THE FRIENDS OF GOODAN RANCH/ SYCAMORE CANYON NOVEMBER 13, 2017

**Attending:** Carol Crafts, Ann Tipps, Terry Callan, Barbara Lerma, Phoenix Von Hendy,  
Mike Overy and **Guests:** Matt Sanford, Louis Chertkow  
**Meeting start time:** 7:08 pm

**Ranger report:** Louis Chertcok introduced himself. He has been with County Parks for a lot of years, was at Sweetwater for 9 years, was a park attendant at Goodan Ranch before the 2003 Cedar Fire. He is happy to be at Goodan, appreciates his great staff, and is looking forward to increasing visitation to the Preserve.

Matt noted that Louis' reassignment at Goodan is part of a large round of transfers within County Parks, getting more people experience at more of the parks. Justin had gone to Stelzer and park attendant Pharoah is also leaving. Mike Ambrose is staying on for now, as is Jeff.

**Secretary's report** - included in December's newsletter: Accepted as published.

**Treasurer's report**—Checking Account Balance - \$5,184 Savings Account Balance - \$13,905  
Total Balance - \$19,089. End of December, deposited all of the 2018 memberships received.  
Purchased two canopies for the ranch for a total of \$191.

**Tracking Report**—More new woodrat nests but less other signs than usual. Very few deer tracks this survey, not much scat from any species. We did have skunk signs this survey period. The hard rain from a month before probably had a negative effect. The Park Staff had also brushed along most of the trail a few days before the transect survey.

**Proposed Access Plan**—Many of us wrote comments before the February 7 deadline, but very few of us have gotten replies yet. Phoenix received a reply the next day. Matt suggested checking to make sure email addresses are correct and resend comments even though the deadline has passed. Matt also explained the process further and expects the proposed trails map will change before the plan is finalized. The timeline is on the website.

**SDG&E Gas Pipeline**—There is no new info on this. SDG&E still has several options, including repairing the existing pipeline, and expects the CPUC to make a decision in 2019.

**New Business**—A Goodan family member is coming down this Friday. Carol will meet them at the gate and take them down.

The Scripps Ranch Fair will be happening this spring, most likely in June. This is prior to our next meeting. Carol will send an email when she gets notice.

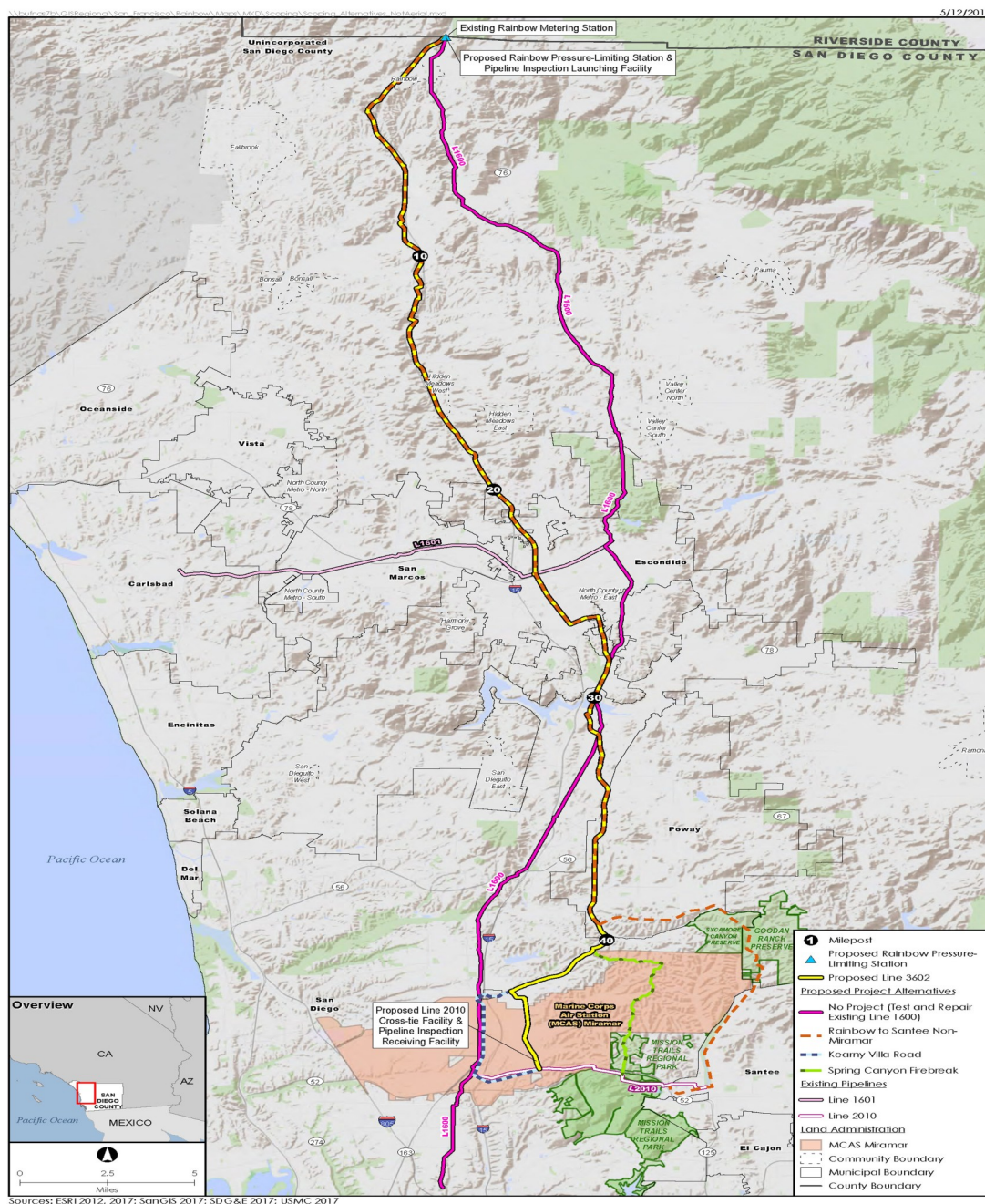
**Next Board Meeting is Monday, May 14, 2018 Meeting adjourned at 8:06 pm**



# Proposed Pipeline

Have you seen this proposal found on line for the **SDG&E New Natural Gas Line 3602 and Derating Line 1600 (PSRP)**? One of the proposals goes thru Goodan Ranch / Sycamore Canyon!

<http://www.cpuc.ca.gov/Environ.../.../ene/sandiego/sandiego.html>



**Goodan Ranch Staging Area**

16281 Sycamore Canyon Road, Poway, CA 92064

**Hours:** 8 a.m. – 7 p.m., April – Sept.

8 a.m. – 5 p.m., Oct. – March

Pedestrian access is available from sunrise to sunset, daily.

The Goodan Ranch staging area is accessed from Poway Rd. east on Garden Rd, then south on Sycamore Canyon Rd. Sycamore Canyon Rd. ends at parking lot.

**Highway 67 Staging Area**

13920 Highway 67, Lakeside, CA 92040

**Hours:** 8 a.m. – 5 p.m., daily

Pedestrian access is available from sunrise to sunset, daily

The Highway 67 staging area is accessed through SOUTHBOUND Highway 67 only, half a mile south of Scripps Poway Parkway.

(Please see county web site for more information)

**Every Sat/ Sun 10 am-** Come on out. Our Park Rangers will provide a nature walk, enjoying coastal sage scrub and chaparral-covered hills and the history of Gooden Ranch.

**March 16<sup>th</sup>, 2018** - Star Party - Join SDCC volunteer astronomers and County Parks for a night with the stars. Program will be held at Highway 67 Staging area which is accessed via Highway 67 southbound only.

**April 21<sup>st</sup> 2108 - 9:00am-10:00am** - Touch Table, Come out and join Park staff in an interactive touch table to learn more about our local flora and fauna . Find out about the rich history of this amazing preserve. Animal pelts, bone clones and historical artifacts will be on exhibit as well as much more.

**May 18<sup>th</sup>, 2018** - Star Party - Join SDCC volunteer astronomers and County Parks for a night with the stars. Program will be held at Highway 67 Staging area which is accessed via Highway 67 southbound only.

**ALLOW ½ HOUR TO PARK AND WALK TO THE  
VISITOR'S CENTER.**

**Please check descriptions closely.**

No vehicular traffic is permitted in the Preserve.

Transportation for those with disabilities can be arranged, by calling the **Ranger** at **(858)513-4737**.

The Park's website is [www.sdparks.org](http://www.sdparks.org).





**Friends of Goodan Ranch  
&  
Sycamore Canyon Open Space**  
Webpage—GoodanRanch.org  
Facebook—Goodan Ranch  
Email—FriendsofGoodanRanch@gmail.com

**Please enroll me as a member of Friends of  
Goodan Ranch & Sycamore Canyon Open  
Space.**

Name or Business \_\_\_\_\_  
Contact Name \_\_\_\_\_  
Address \_\_\_\_\_  
City, State, Zip \_\_\_\_\_  
Phone \_\_\_\_\_

**Please select your membership level**

- ☐ • \$25 Individual  
☐ • \$20 Student /or/ Senior -62 and above  
☐ • \$40 Family  
☐ • \$50 Small Business  
☐ • \$100 Patron  
☐ • \$1,000 Lifetime Member

Fill out the requested information & mail it with your check to:

Friends of Goodan Ranch & Sycamore Canyon  
Memberships  
13030 Birch Lane  
Poway, CA 92064

WE ARE ON THE WEB AT  
GOODANRANCH.ORG

The Sycamore Sage  
103030 Birch Lane  
Poway, CA 92064

